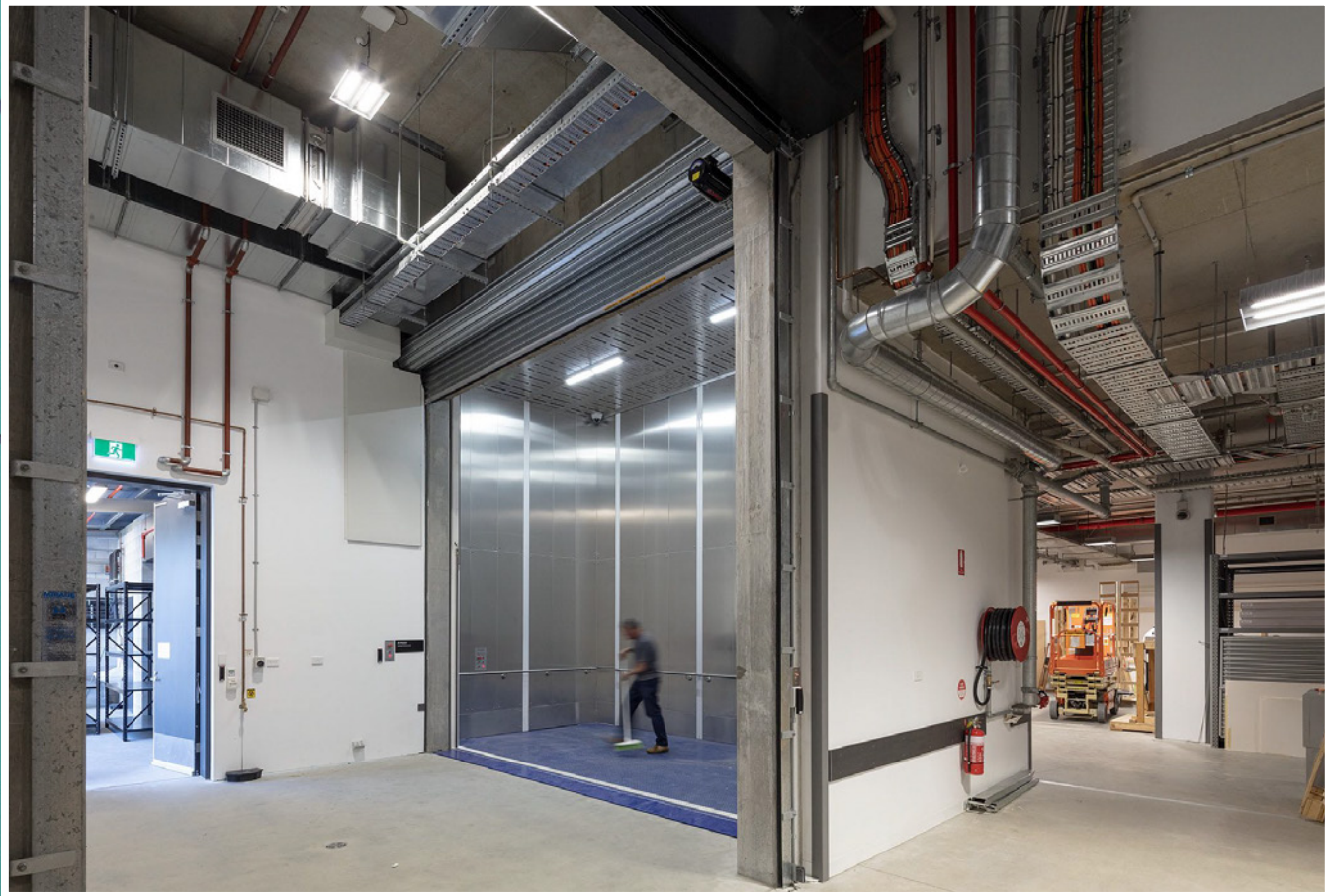


**Below** Southwell Lifts and Hoists created a custom scissor art hoist with a 5 tonne capacity and a 5.9m x 2.9m platform.



**The newly completed HOTA Gallery required a custom designed hoist to assist in the movement of the gallery's iconic pieces.** Southwell Lifts and Hoists, based in Camden in south-west Sydney designed, manufactured and installed the bespoke scissor art hoist with a 5 tonne capacity and a 5.9m x 2.9m platform.

The particular challenge in designing and installing the art hoist at the HOTA Gallery was that the walls on the hoist were specified at 5m high. Due to the size and complexity of the project, most of the company's 23-strong workshop team were involved as well as the engineering design team, multiple draftsmen, the factory manager, the project manager and installations team.

COVID-19 posed extra difficulties as the whole project was carried out during the lockdown period.

"The special art hoist is a totally Australian made product," said Hamish McGregor, General Manager of Southwell Lifts and Hoists. "Our factories at Camden and Smeaton Grange can provide lifts and hoists anywhere in Australia and New Zealand. We also provide after sales service to all our customers, ensuring the longevity of our products and minimising down times.

"One of our 25 tonne truck lifts in the Melbourne Art Gallery has been operating for 30 years and is continuing to provide valuable service," said Hamish.

Southwell Lifts and Hoists was established as a family-run business in 1945 and brings their 76 years of experience in mechanical and electrical engineering to the design, manufacture, installation and servicing of speciality lifts and hoists including ground support equipment for the airline industry, goods lifts for the self-storage industry, car lifts with turntables and one-off lifting applications.

Southwell Lifts and Hoists currently has 67 projects underway around Australia and New Zealand, including a custom triple scissor art hoist for the Sydney Modern Art Gallery with a 9 tonne capacity travelling 9.5m.

*For more information contact Southwell Lifts and Hoists, 36 Edward Street, Camden NSW 2570, phone 02 4655 7007, email [sales@southwell.com.au](mailto:sales@southwell.com.au), website [www.southwell.com.au](http://www.southwell.com.au)*